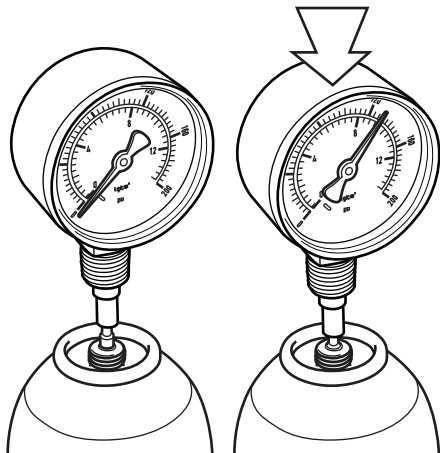


AI PRESSURE GAUGE USER'S MANUAL

The AI Pressure Gauge can also be fitted directly onto computer duster gas cans, propane tanks (via an AI Propane Adaptor).

Simply hold the can upright or set it on a level surface, put the AI Pressure Gauge on the can nozzle and push straight down. Record the pressure shown on the gauge, as well as the ambient temperature, and consult the graph inside this manual.



Many brands of Green Gas are primarily propane, but some may be contaminated with butane, leading to lower pressures than would be expected. Because many Airsoft gas bottlers do not explicitly state their composition, use this gauge to directly measure your propellant performance.

The AI Pressure Gauge is crucial tool for reliably comparing the performance of various gas guns. Being able to measure your propellant pressure is analogous to knowing the rating on your AEG spring. Higher pressure propellants drive higher muzzle velocity from your GBB as an upgrade spring would drive a higher velocity from your AEGs.

Important!

It's important to ensure that you know the temperature of the gas being measured. Duster gas at 33 degrees Celsius will exert the SAME pressure as propane at 20 degrees Celsius.

Propellant Temperature-Pressure Behaviour

